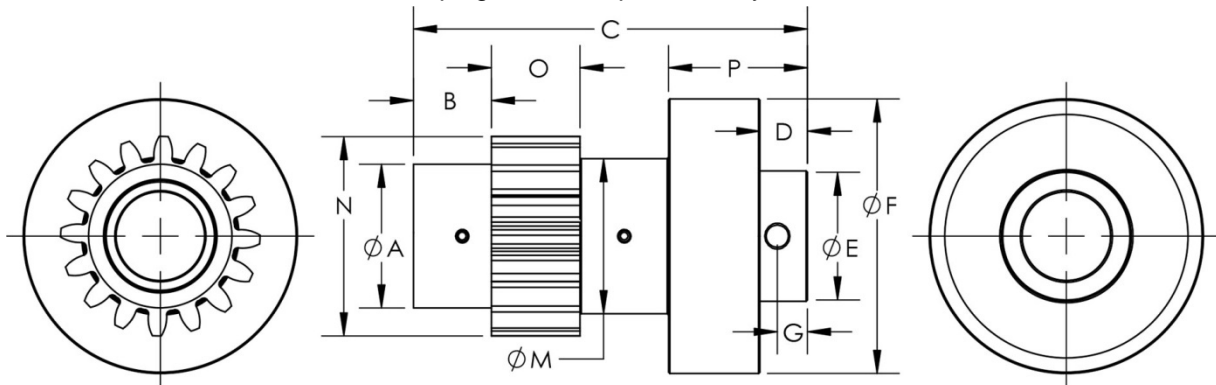


## 2795 Roller Clutch

The Tiny-Clutch 2795 Overrunning Gear Clutch is a miniature roller and cam type one-way clutch from our D-Series line of clutches. The D-Series clutches are most frequently used to allow a driven member to overrun the input, or for backstopping a load, they can also function to convert oscillating motion to rotary motion. These clutches use our proven cam and roller principle for long life with trouble free performance. The cam, housing and rollers are made of hardened steel and each roller is energized by a spring which is held square and centered in a drilled pocket. The design of the clutch allows for near zero backlash as well as high free-wheeling speeds. The clutch will not jam in the free direction.

The Tiny-Clutch 2795 Overrunning Gear Clutch is based off of our D125 Roller Clutch and features a 16 tooth, 16 pitch, 14.5° pressure angle gear. This clutch has a ½ inch (12.7mm) bore, the cam is pinned to your shaft, and power may be applied to the clutch through either the gear or the cam. This clutch is Left hand drive and is the original equipment clutch in Ribbonmasters hot stamping machines produced by Crocodile Industries.



### Specifications:

Maximum Torque	50lbs-in   5.6Nm	Dimension C	2.22in   56.5mm	Dimension M	.87in   22.2mm
Maximum Speed	2,000 RPM	Dimension D	.27in   6.8mm	Dimension N	1.12in   28.6mm
Typical Weight	6.6oz   186g	Dimension E	.74in   18.7mm	Dimension O	.50in   12.7mm
Dimension A	.81in   20.6mm	Dimension F	1.55in   39.3mm	Dimension P	.78in   19.9mm
Dimension B	.44in   11.2mm	Dimension G	.17in   4.3mm		

### Mounting Specifications:

<b>Bore</b>	<b>Cross Hole</b>
1/2in   12.7mm	1/8in   3.2mm

### Clutch Direction:

Left handed clutches drive counter clockwise and slip clockwise.

