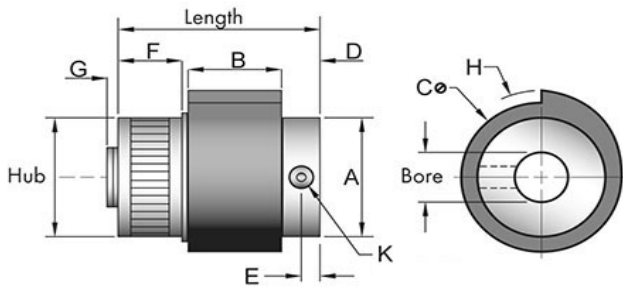
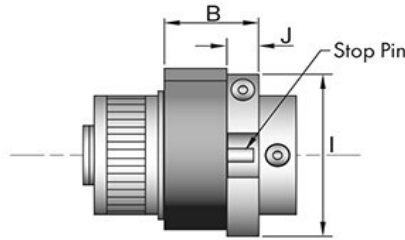


# SP100



STANDARD MODEL



ADJUSTING COLLAR OR  
OVERTRAVEL STOP

## Tiny-Clutch SP100 SP-Series Wrap Spring Clutch

Specifications:		Options:	
Max Torque	250 in/lbs	Bore	3/8", 7/16", 1/2", 9mm, 10mm, 11mm
Length	2.05 in		12mm, 13mm
Hub	1.00 in	Mounting	Set Screw, Cross Hole,
Dimension A	1.40 in		Set Screw & Cross Hole
Dimension B	1.00 in	Drive	Clockwise, Counter Clockwise
Dimension C	1.50 in	Input	Hub, Shaft
Dimension D	0.33 in	Function	Overrunning *, On-Off **, Indexing **
Dimension E	0.16 in	# of Trip Lugs	0, 1, 2, 3, 4, 5, 6, 8, 10, 12 Lugs
Dimension F	0.56 in	Hub Type	Knurled Drum, Plain Drum
Dimension G	0.10 in		Adjusting Clamp ***
Dimension H	0.87 in	Add-Ons	Over-Travel Stop ***
Dimension I	1.50 in		
Dimension J	0.27 in		

\* Requires 0 Lugs    \*\* Requires 1 or more Lugs    \*\*\* Only available with indexing

Tiny-Clutch | Helander Products, Inc.