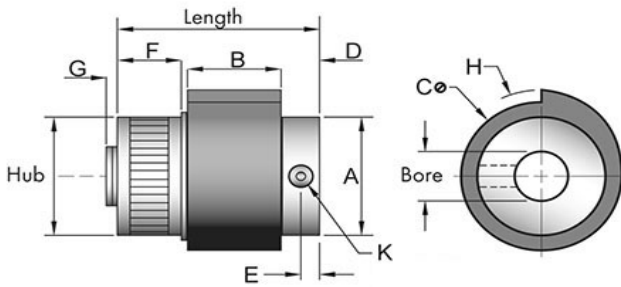
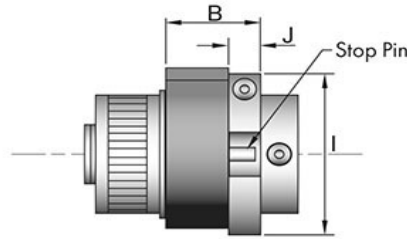


SP75B



STANDARD MODEL



ADJUSTING COLLAR OR
OVERTRAVEL STOP

Tiny-Clutch SP75B SP-Series Wrap Spring Clutch

Specifications:		Options:	
Max Torque	50 in/lbs	Bore	7/16", 1/2", 11mm, 12mm, 13mm
Length	1.55 in	Mounting	Set Screw, Cross Hole,
Hub	0.88 in		Set Screw & Cross Hole
Dimension A	1.25 in	Drive	Clockwise, Counter Clockwise
Dimension B	0.70 in	Input	Hub, Shaft
Dimension C	1.31 in	Function	Overrunning *, On-Off **, Indexing **
Dimension D	0.26 in	# of Trip Lugs	0, 1, 2, 3, 4, 5, 6, 8, 10, 12 Lugs
Dimension E	0.12 in	Hub Type	Knurled Drum, Plain Drum,
Dimension F	0.53 in	Add-Ons	Adjusting Clamp ***
Dimension G	0.07 in		Over-Travel Stop ***
Dimension H	0.72 in		
Dimension I	1.28 in		
Dimension J	0.20 in		

* Requires 0 Lugs ** Requires 1 or more Lugs *** Only available with indexing

Tiny-Clutch | Helander Products, Inc.